

Dr. med. Lorena Dini, MD, MScIH, PhD
Disclosure of potential conflict of interest



Institute of General Practice

Head of Working Group Health Policy and Systems Research
Senior Researcher, Principal Investigator (Full time employed)



Coalition of Partners, Member of the core team,
WHO-Regional Office for Europe
Division of Health Systems and Public Health



European Public Health Association
Vicepresident Section Health Services Research (elected)



European Forum for Primary Care
Member of the advisory board (elected)

Memberships



Research Grants / Funding



**Gemeinsamer
Bundesausschuss**
Innovationsausschuss

**Landeszentrum Gesundheit
Nordrhein-Westfalen**



ROBERT KOCH INSTITUT



**KASSENÄRZTLICHE
BUNDEVEREINIGUNG**



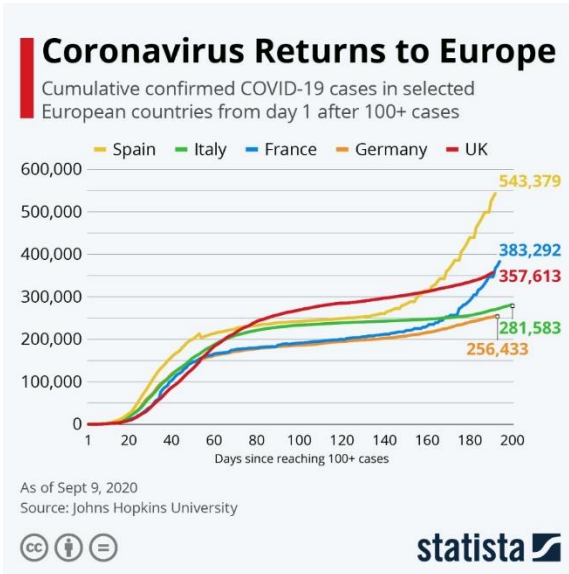
**ZENTRALINSTITUT FÜR DIE
KASSENÄRZTLICHE VERSORGUNG
IN DEUTSCHLAND**



**Kassenärztliche Vereinigung
Mecklenburg-Vorpommern**
Körperschaft des öffentlichen Rechts

Overview Covid-19 in Germany 2020 since march 2020

- January 27 First COVID-19 confirmed case near Munich, Bavaria
German disease and epidemic control is advised by the Robert Koch Institute (RKI) according to a national pandemic plan.
The outbreaks were first managed in a **containment stage**, which attempted to minimise the expansion of clusters.
- March 13 Pandemic managed in the **protection stage** as per the RKI plan:
- **school and kindergarten closures**
 - **postponing academic semesters**
 - **prohibiting visits to nursing homes** to protect the elderly.
 - closing **borders** to Austria, Denmark, France, Luxembourg and Switzerland
- March 22 Curfews imposed in six German states, other states prohibited physical contact with more than one person from outside one's household
- July – August Rising numbers of reported infections in July and August throughout the country prompted authorities and the RKI to urge the public to remain vigilant in order to ward off a possible second wave of the pandemic.
Hotspots, meat factories (working and housing conditions)
- Sept 11 258,480 ; 9,347 deaths (3,6%) and 231,400 recoveries.
Sept 17 265,857 cases, 2,194 new cases since yesterday, about 11 cases / 100.000 Inhabitants



Germany's low fatality rate, compared to fatality rates in Italy and Spain, has generated a discussion and explanations that cite the country's higher number of tests performed, higher number of available intensive care beds with respiratory support and higher proportion of positive cases among younger people.

Fact: 80% of Covid Cases were and are managed in office-based outpatient care by GPs

Source: <https://www.statista.com/chart/21112/covid-19-growth-curve-selected-countries/>

More Information: <https://www.statista.com/search/?q=covid&Search=&qKat=search>

Ambulatory, Primary Care, General Practice, public health in Germany

Patients enter the system either visiting any physician office OR hospital

Stationär (Sektor)

hospital based, in patient care

ambulanter (Sektor)

office-based, out patient care

Primary care

Primärarzt

Allgemeinmediziner; Hausarzt,
praktischer Arzt

practitioner, general (GP)

general medicine

Allgemeinmedizin

family physician (in Germany); GP
(in the UK)

Allgemeinarzt / -ärztin

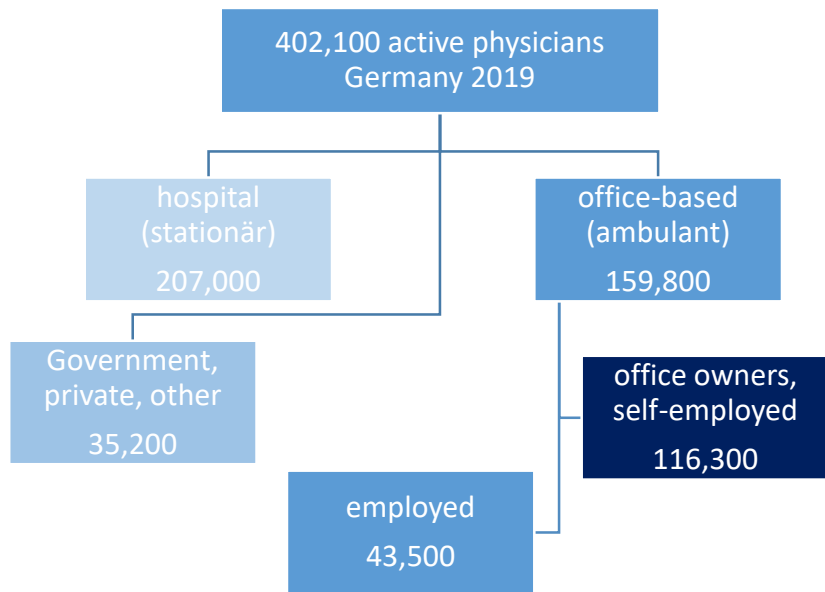
Facharzt für Allgemeinmedizin

(medical) specialist, specialist
physician for general medicine

Source: <https://www.kbv.de/html/7851.php>

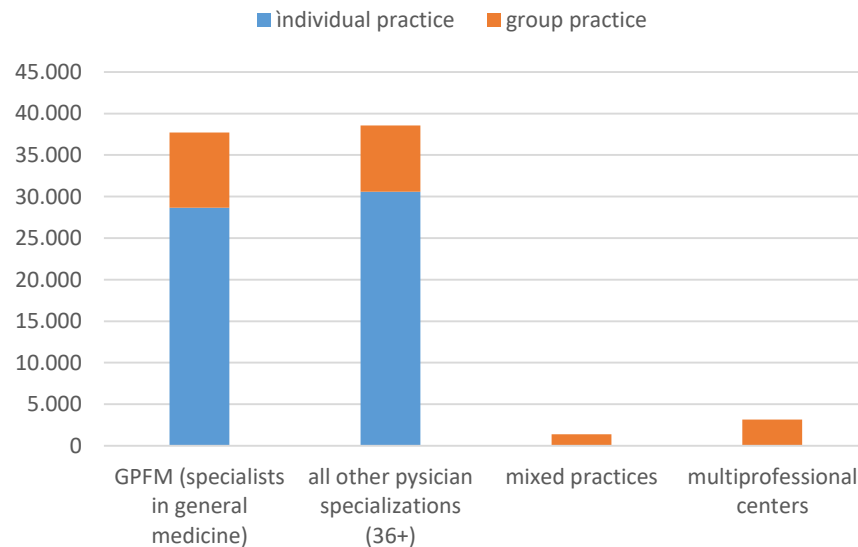
Disclaimer: similarity of words between languages can be misleading.

The healthcare system in Germany statistics and the concept of primary care



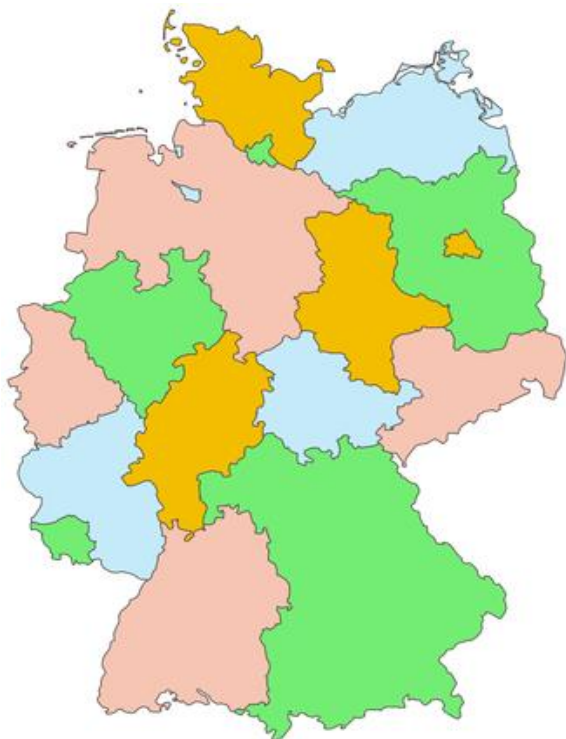
Source: https://www.bundesaerztekammer.de/fileadmin/user_upload/downloads/pdf-Ordner/Statistik2019/Stat19Tab08.pdf accessed 17.09.2020

number of primary care offices in Germany



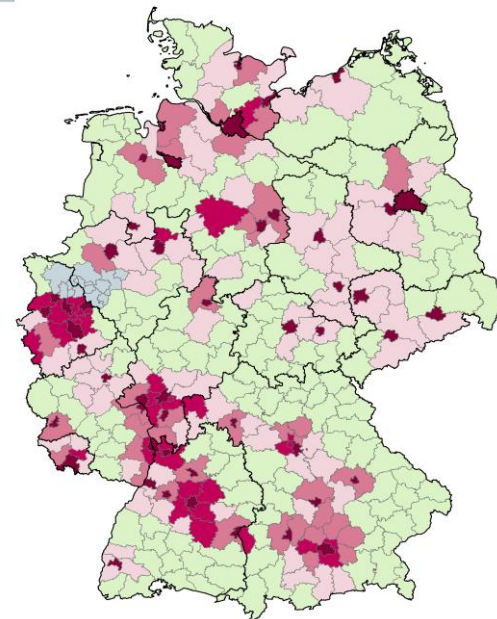
Source: National Association of Shr-physicians Statistische Informationen aus dem Bundesarztregister und MVZ-Statistik, KBV, 2018, accessed 17.09.2020

NEED RELATED PLANNING (BEDARFSPLANUNG, ambulante Versorgung)



Typisierung der Bedarfsplanungsregionen

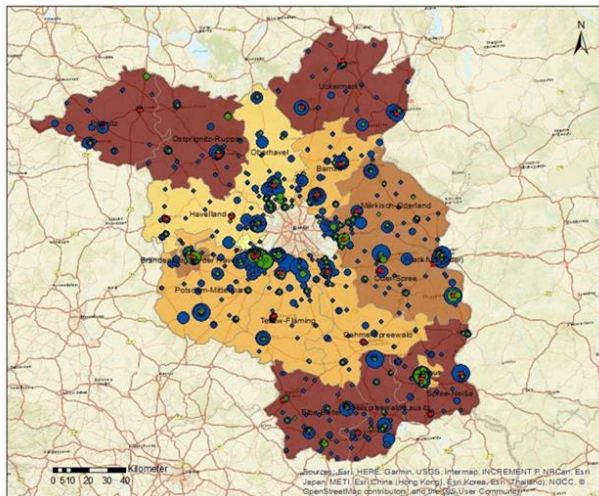
- Typ 1: Stark mibversorgt
- Typ 2: Mibversorgt und mit-versorgt
- Typ 3: Stark mibversorgt
- Typ 4: Mibversorgt
- Typ 5: Eigenversorgt
- Typ 6: Polyzentrischer Verflechtungsraum



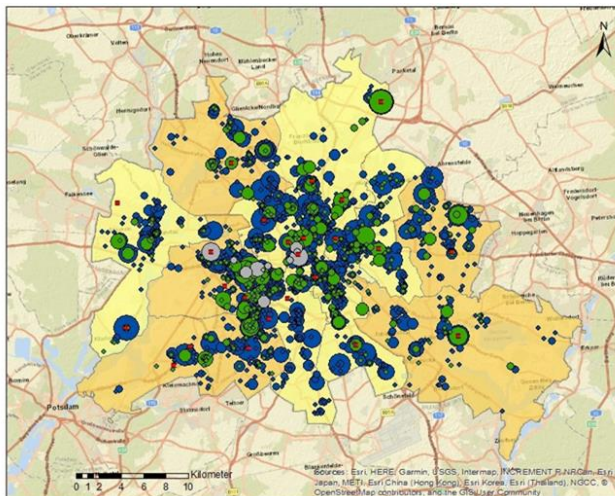
Regional primary care for women offices & centers in the northeast of Germany, 2019



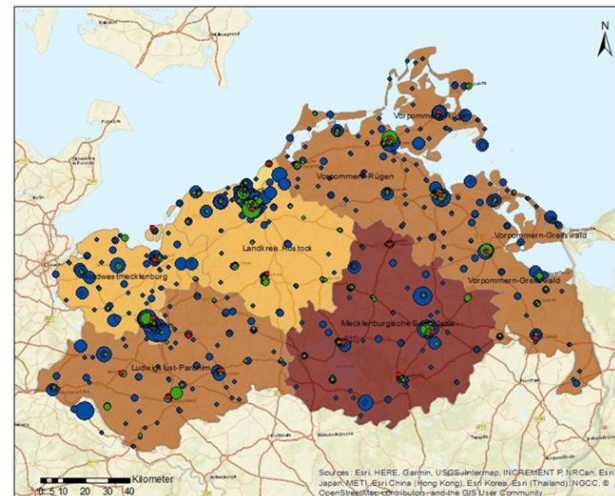
Brandenburg



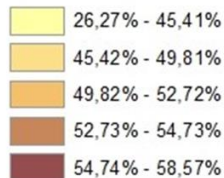
Berlin



Mecklenburg-Vorpommern

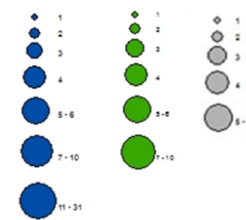


Anteil der weiblichen Bevölkerung ab 50 Jahren an der weiblichen Gesamtbevölkerung



Quellen: Bundesamt für Kartographie und Geodäsie (2017), Amt für Statistik Berlin, Brandenburg (2016-2016), Statistisches Amt Mecklenburg-Vorpommern, ESRI (2018), Autor: M. Thießen (RKI), 05.02.2019

Distribution primary care offices of **Family Medicine & General Practice (GPFMs)** and **Gynecologists (OB-GYN)** and **Hospitals with OB-GYN ambulatory/outpatient** Departments



Thank you