



**GLOBAL BUSINESS
SCHOOL FOR HEALTH**



SPECIALISED EXECUTIVE EDUCATION

Reimagining
healthcare
management





Welcome

Professor Nora Colton

Director of the UCL Global
Business School for Health



“As the world’s first business school dedicated to health, our mission is simple, to cultivate a new generation of healthcare management leaders. Why do we need to do this?

There has never been a more important time for excellent health leadership and management to meet the challenges of healthcare delivery and improved population health on a global scale in the 21st century. Yet, professional education in the healthcare sector is very underdeveloped compared to the need.

We focus on the power of interdisciplinary learning to shape the most effective outcomes, utilising the strengths of London’s leading multidisciplinary university, and partnering with stakeholders across the healthcare landscape. Our unique global community is helping to elevate the global impact of healthcare delivery through strategic leadership, partnerships and innovation.

If you’re working to enhance patient outcomes, promote wellbeing, and drive sustainability, our executive education could be the perfect fit. I hope you join us.”

A world-leading university behind the business school

Our story

The UCL Global Business School for Health (UCL GBSH) was established in 2021 in response to an increasingly urgent and worldwide need for improving healthcare management.

UCL GBSH is cultivating a new generation of healthcare management leaders. Our programmes tackle public health engagement and health inequalities locally, nationally and globally. They seek to enhance patient outcomes, promote well-being and drive sustainability, embracing innovation by harnessing technology and digitisation.

UCL – Disruptive thinking since 1826

Founded in 1826, UCL is London's leading multidisciplinary university, with more than 16,000 staff and 50,000 students from over 150 different countries. UCL has been awarded the University of the Year 2024 by the Times and Sunday Times Good University Guide.

UCL has been ranked 5th in the world for public health research (ShanghaiRanking's Global Ranking of Academic Subjects 2021) and as an established world top 10 university that is a global leader in research and enterprise across medicine, health and education,

UCL is the ideal home for the world's first business school dedicated to health. Recognised for disruptive, critical thinking and widespread influence for the long-term benefit of humanity, UCL is dedicated to practical impact and improving society. Health spans across all of UCL's faculty areas, with half of the university's staff engaged in areas of global health and human wellbeing.

2nd
ranking UK
university
for research
strength

9th
in the world's top
10 universities
(QS World University
Rankings 2025)

More than
16,400
academic and
professional
services staff
(over 1/3 non-UK)

840
professors

Our expertise, your choice

Global health policy and practice

- Changing Health Systems
- Healthcare Power and Politics
- Concepts and Controversies in Global Health
- Research Methods and Evidence for Global Health
- Climate Change and Health

Healthcare leadership and entrepreneurship

- Strategic Healthcare Leadership
- Leading Innovation and Change in Healthcare
- Organisational Behaviour for an Inclusive and Diverse Workforce
- Coaching Skills for Healthcare Leaders
- Leadership and Management for Global Healthcare
- Commercialisation of Research Ideas
- Approaches to Health Innovation and Needs Assessments
- Leading Change and innovation in Healthcare
- Risk Management in Healthcare

Healthcare marketing

- Healthcare Marketing Management
- Relationship Marketing and Stakeholder Management
- Patient-Centered Service Design
- Patient-Centered System Design
- Pharmaceutical Marketing
- Marketing of Innovations (e.g., Digital Health, MedTech)

Healthcare economics

- Accounting and Financial Reporting for Healthcare
- Healthcare Data Analytics
- Economic Evaluation and Health Financing
- Capital and Equity Markets for Healthcare
- Accounting and Reporting
- Value Assessment, Decision Making and Sustainable Healthcare

Digital informatics

- The Digital Health Landscape
- Digital Health and AI solutions
- Machine Learning in Healthcare
- Principles of Health Data Analytics
- Public Health Data Science
- Informatics for Healthcare Systems
- Digital Health Research Methods and Tools
- Digital Health Transformation

Management in biotech and pharmaceuticals

- Pharmaceutical and Biotech Policies and Practices
- Pharmacoeconomics
- Pharma Commercialisation and Marketing
- Clinical Trial Designs and Statistical Analysis
- Healthcare Supply Chain Management



Unravelling health challenges from an industry perspective

Who is our executive education for?

You could be anyone currently working in, or interacting with healthcare and associated industries, or someone entering the health sector. Indicative job roles include:

- Healthcare professionals
- Managers
- Senior executives
- Entrepreneurs
- Board members
- Investors

Why do people choose our programmes?

- Career development
- Pivoting into the health sector
- Gaining deeper or broadening knowledge
- Building confidence
- Adapting to change
- Enhancing professional networks

We work with organisations to develop bespoke learning aligned to their strategic objectives; whilst also providing carefully designed programmes for the individual learner.

Custom programmes

Custom programmes are designed to meet clients' needs as part of a highly collaborative process. Programmes can be delivered in-person, online or a combination of both; run to a bespoke schedule, in concentrated blocks of learning or on a modular basis, depending on preference and optimum engagement.

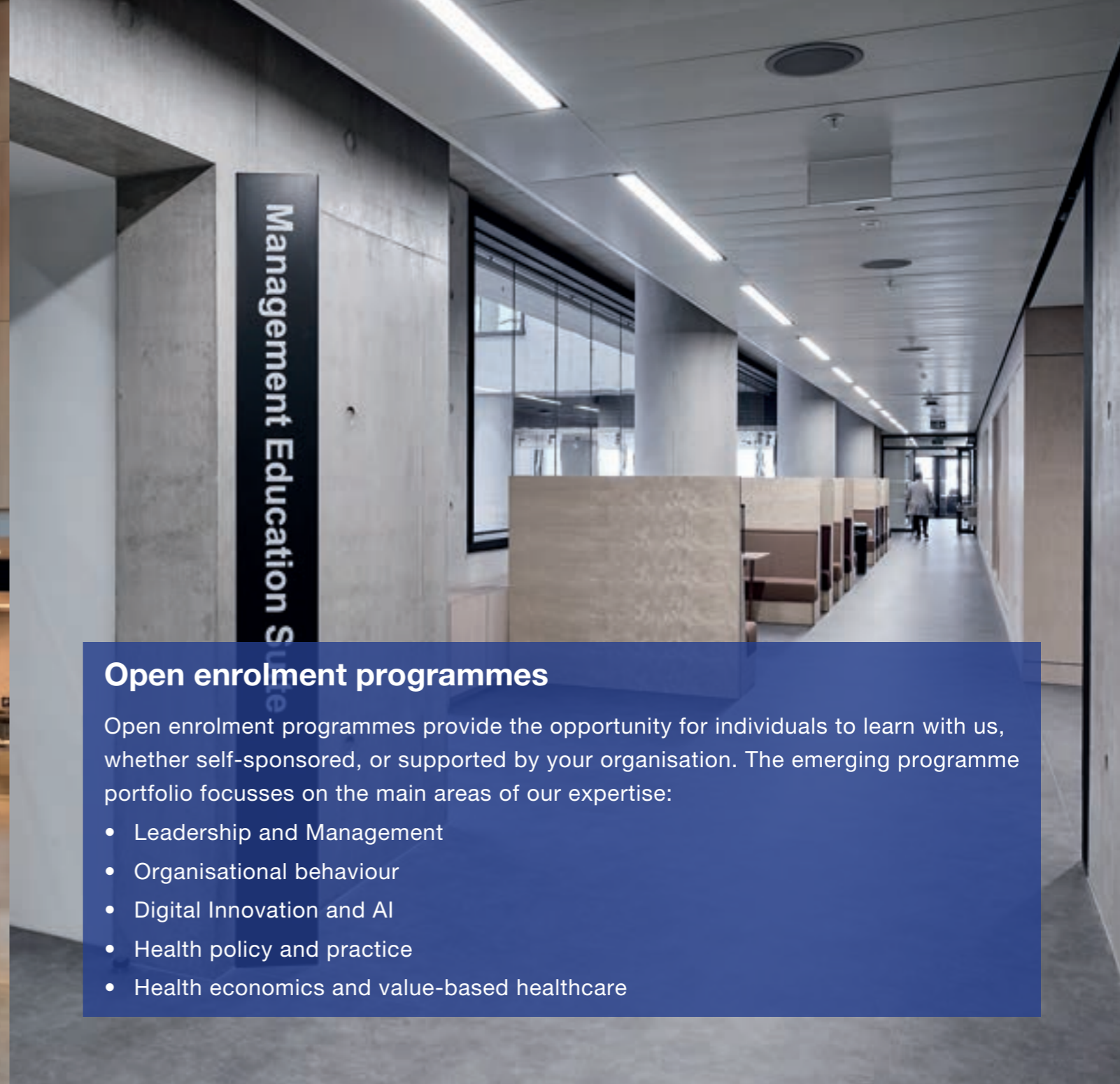


Management Education Suite

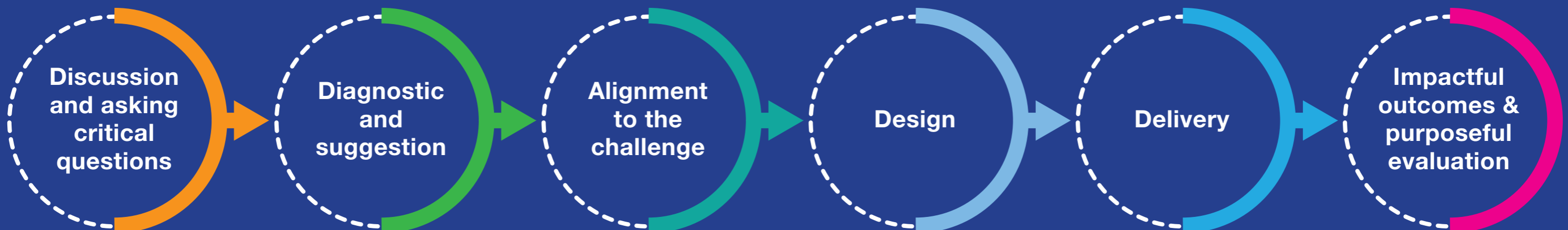
Open enrolment programmes

Open enrolment programmes provide the opportunity for individuals to learn with us, whether self-sponsored, or supported by your organisation. The emerging programme portfolio focusses on the main areas of our expertise:

- Leadership and Management
- Organisational behaviour
- Digital Innovation and AI
- Health policy and practice
- Health economics and value-based healthcare



The engagement process – meeting your challenge:



A selection of teaching experts



Professor Mark Britnell

Professor (Teaching)

Dr Preethi John

Chair of the Board of Examiners,
Deputy Director MBA Health (Human
Resource Management and Coaching) and
Associate Professor (Teaching)



Professor Kabir Sheikh

Professor of Global Health Systems and Policy

Professor Simcha Jong

Deputy Director of Research,
Professor and Director, Doctorate in
Business Administration (DBA) Health

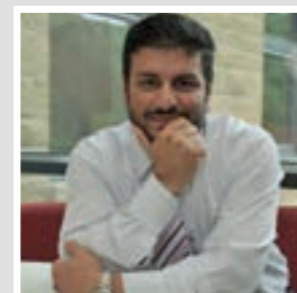


Dr Marzena Nieroda

Deputy Director Partnerships and Enterprise,
Assistant Professor in Marketing and
Commercialisation in Healthcare

Dr Radi Haloub

Deputy Director of Education, Programme
Lead MSc Biotech and
Pharmaceutical Management



Dr Waty Lilaonitkul

Assistant Professor in
Digital Health Technologies

Professor Sotiris Vadoros

Professor of Health Economics and
Director of Executive MBA Health



Dr Rodolfo Catena

Lecturer in Operations and
Supply Chain Management

Dr Yemisi Bolade-Ogunfodun

Associate Professor (Teaching)
in Organisational Behaviour



Professor Shafi Ahmed

Honorary Professor of Practice

Professor Julie Davies

Professor (Teaching)
and Director MBA Health



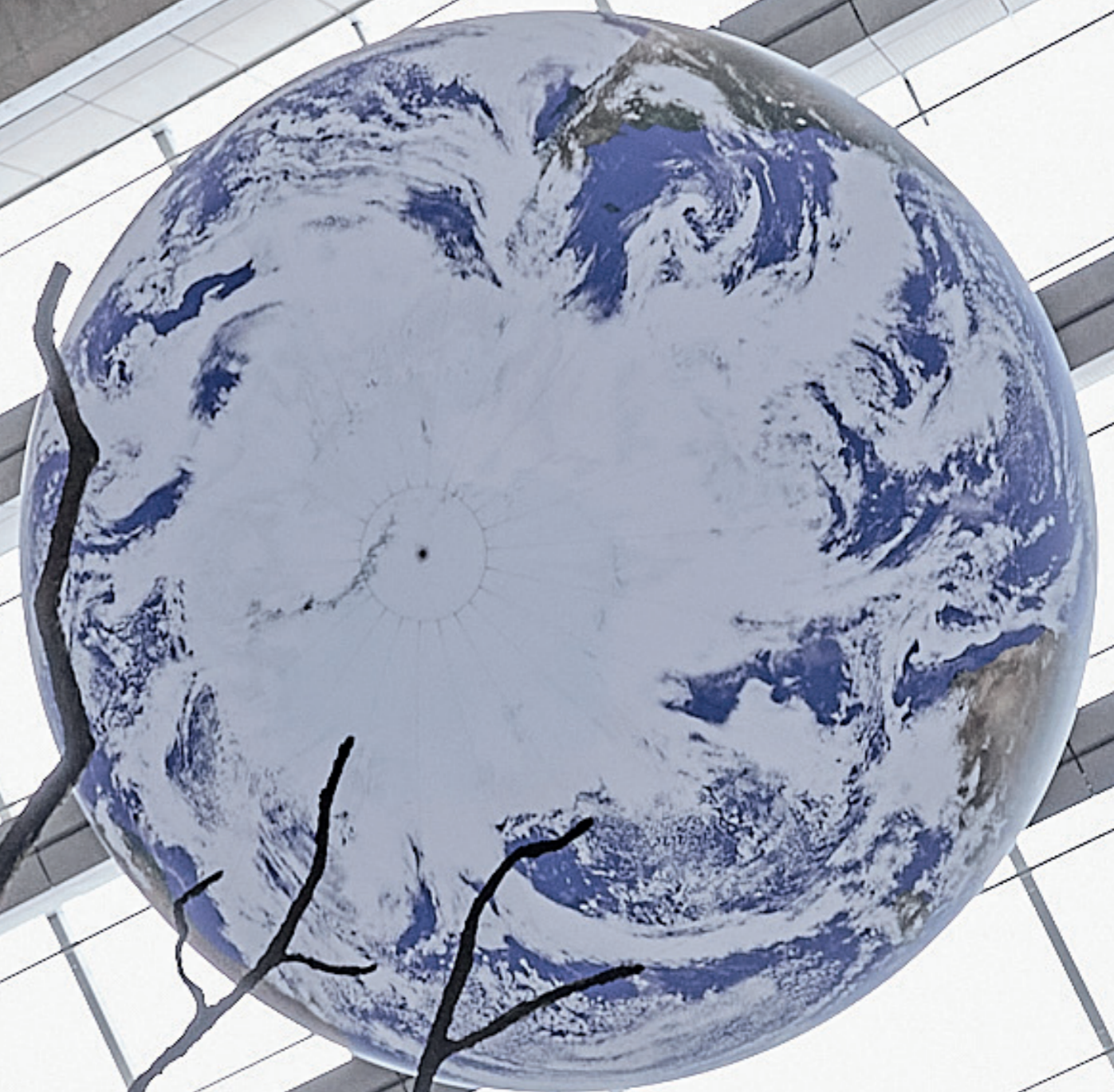
Why embark on an executive education programme?

- Develop your expertise in the most relevant and topical subjects in healthcare
- Enhance leadership and innovation qualities that are critical to health sector employers, including change management, digital transformation, resilience, ethics and applying a global mindset
- Engage with our partnerships, which stimulate true innovation and give students 360-degree insights into the global health economy
- Improve your earning potential, employability and job security while updating your leadership skill set

Be at the centre of health innovation in London

We are immersed in our communities of east London and in the MedCity knowledge zone of Bloomsbury which is home to UCL's world renowned research community, The Francis Crick Institute and Wellcome Trust, the world famous hospital sites of Great Ormond Street, Moorfields and The Royal Marsden, private health giants including Cleveland Clinic, NGOs and national charities, royal and learned societies and tech giants such as Google DeepMind.

Our close association with University College London Hospitals NHS Foundation Trust (UCLH), is complemented by our proximity to the headquarters of the British Medical Association (BMA), British Medical Journal (BMJ) and the National Institute for Clinical Excellence (NICE).



Alumni benefits

Your life-long association with us

Our alumni are one of the school's greatest assets, and with a growing membership of international healthcare leaders, you'll be joining a powerful network. Upon programme completion, you will become a member of the UCL GBSH Global Alumni Network, giving you access to:

- The exclusive UCL GBSH Executive Alumni LinkedIn group
- Select UCL GBSH sponsored global events
- Alumni discount on selected UCL GBSH Executive Education programmes
- Updates on faculty research, new programmes, and UCL GBSH initiatives
- Select online publications such as the UCL GBSH Newsletter
- UCL GBSH sponsored webinars and lectures from leading experts

Inclusivity at the heart of everything we do

We are committed to inclusivity and participation to reflect our global ambitions. The London School of Medicine for Women was established in 1874 and was the first medical school in Britain to train women as doctors, merging with UCL in 1998 to form a new school at UCL. Today, the Athena Swan accreditation for gender equality has been achieved across our broad scientific community at UCL.



Ready to join us on the journey?

Become part of a new generation of healthcare management leaders and innovators intent on making a difference to create a healthier society.



Explore the
full executive
education offering

- [ucl.ac.uk/global-business-school-health/
executive-education](https://ucl.ac.uk/global-business-school-health/executive-education)
- ✉ executiveeducation.gbsh@ucl.ac.uk



**GLOBAL BUSINESS
SCHOOL FOR HEALTH**

UCL Global Business School for Health Programme Portfolio:

Executive Education

MBA Health

Executive MBA Health

Senior Leader (Health)
Apprenticeship+ EMBA

DBA Health

MPhil/PhD Healthcare
Management

MSc Biotech and
Pharmaceutical Management

MSc Digital Health
and Entrepreneurship

MSc Global Healthcare
Management with routes

BSc/MSci Business and Health

 ucl.ac.uk/global-business-school-health

 [ucl_GBSH](https://twitter.com/ucl_GBSH)

 [the-ucl-global-business-school-for-health](https://www.linkedin.com/company/the-ucl-global-business-school-for-health)

 [UCLGBSH](https://www.facebook.com/UCLGBSH)

