



UCL

Expand

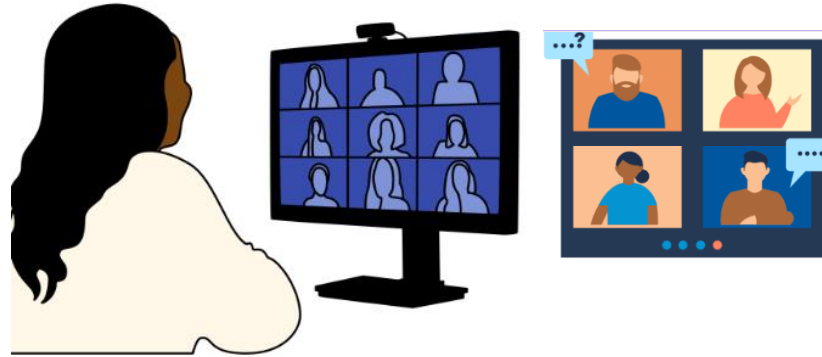
**Life and Health
Sciences**

Sessions



Academic Writing 13th March

Pre-session tasks



Session Activities

Extra Resources

Drop In Sessions



- Cameras on please
- No question is silly
- An eagerness to learn, share ideas and HAVE FUN !
- Attempt pre-session activities (take less than 15 mins)



Research & Analysis 21st

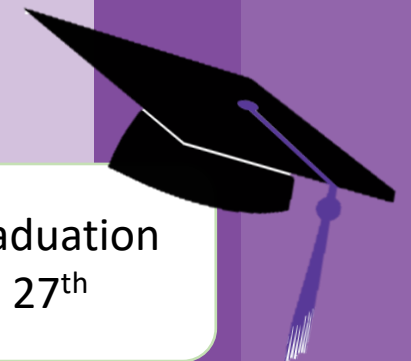
Critical Thinking 28th

Project Work 6th

Academic Writing 13th

Presentation & Debate 20th

Graduation 27th



Overview



Research and Analysis (21st Feb)

Understanding of **how to investigate a topic**, how to distinguish **between reputable and un-reputable sources** of information, and the ability to **examine the implications of your research**.

Monday
Drop In
Sessions

Critical Thinking (28th Feb)

Understanding of **how to analyse sources to form a judgement**, the ability to **challenge your own assumptions** and take multiple perspectives on an issue, and awareness of the **difference between a fact and an opinion**

6th March

Project
work

Academic Writing 13th March

Understanding of the **formality, objectivity and precision required to write academically**. To learn how to communicate your project work in an academic capacity, and **how to form conclusions**.

Presentation and Debate 20th March

Understanding of **delivering a clear and persuasive argument**, creating a clear **presentation structure** and the ability to **listen to and answer questions**. This session will directly contribute to the presentation of your projects during the in-person Graduation even

27th March

Graduation
Event

Sessions



- Cameras on please
- 10 mins discussing Pre-session activity
- No question is silly
- An eagerness to learn, share ideas and HAVE FUN !

Research & Analysis 21st

Critical Thinking 28th

Project Work 6th

Academic Writing 13th

Presentation & Debate 20th

Graduation 27th



How is a research paper structured ?



[Academic Writing Padlet](#)

Critical Thinking session [here](#)

[Research and Analysis Padlet](#)

Pre session task

Quickly look at the structure of the news article and its original research article:

- What is the common structure in original research articles
- How is the news article different from the original research article?

Glossary



The papers below may have a lot of new information so please use the glossary to aid your reading

- **Cerebral Small Vessel Disease:** A condition affecting the small blood vessels in the brain, often leading to damage in the brain's white matter.
- **Atrial Fibrillation:** An irregular and often rapid heart rate that can increase the risk of stroke and other heart-related complications.
- **Cognitive Impairment:** The decline in mental abilities, including memory, attention, and problem-solving.
- **Genome-wide Association Studies (GWAS):** An approach used in genetics to identify genetic variations associated with a particular trait or disease across the entire genome.
- **Magnetic Resonance Imaging (MRI):** A medical imaging technique that uses powerful magnets and radio waves to generate detailed images of the internal structures of the body.
- **Structural, Diffusion, and Functional Measures:** Different types of measures in MRI that assess the structure, movement of water molecules, and activity in the brain, respectively.
- **Biostatistics:** The application of statistics to biological and health-related data for the purpose of drawing inferences and making decisions.
- **Genomic Loci:** Specific positions or locations on a chromosome that are associated with particular genes or traits.

Glossary



Mendelian Randomization: A method that uses genetic variants as instruments to assess causality between a risk factor and an outcome.

Multiorgan Perspective: Considering the relationship and interactions between different organs in the body.

Knowledge Portal: An online platform or database that provides access to information, research findings, and resources related to a specific field of study.

Mitigate: To lessen the severity or impact of something.

Colocalizations: The occurrence of different traits or conditions in the same location or region.

Psychiatric Disorders: Mental health conditions that affect mood, thinking, and behaviour.

Depression: A mental health disorder characterized by persistent feelings of sadness and a lack of interest or pleasure in activities.

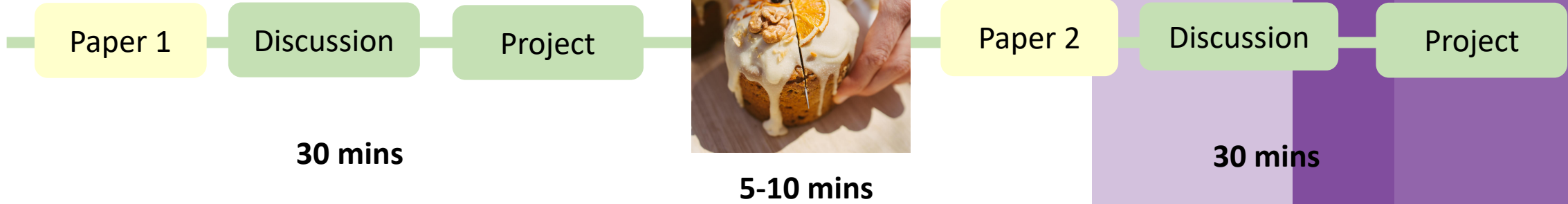
Genetic Architecture: The underlying genetic basis and organization of a trait or set of traits.

Left Ventricle: One of the four chambers of the heart responsible for pumping oxygenated blood to the body.

Myocardial Wall Thickness: The thickness of the heart muscle wall, which can be indicative of heart health.

Academic Writing Session Outline

An understanding of the **formality**, **objectivity**, and **precision** required to write academically. You will also learn how to **communicate your project** work in an academic capacity, and how to **form conclusions**.



30 mins

5-10 mins

30 mins

Paper 1

HEALTH AND MEDICINE



New study reveals strong connection between heart and brain health

Read paper [here](#)

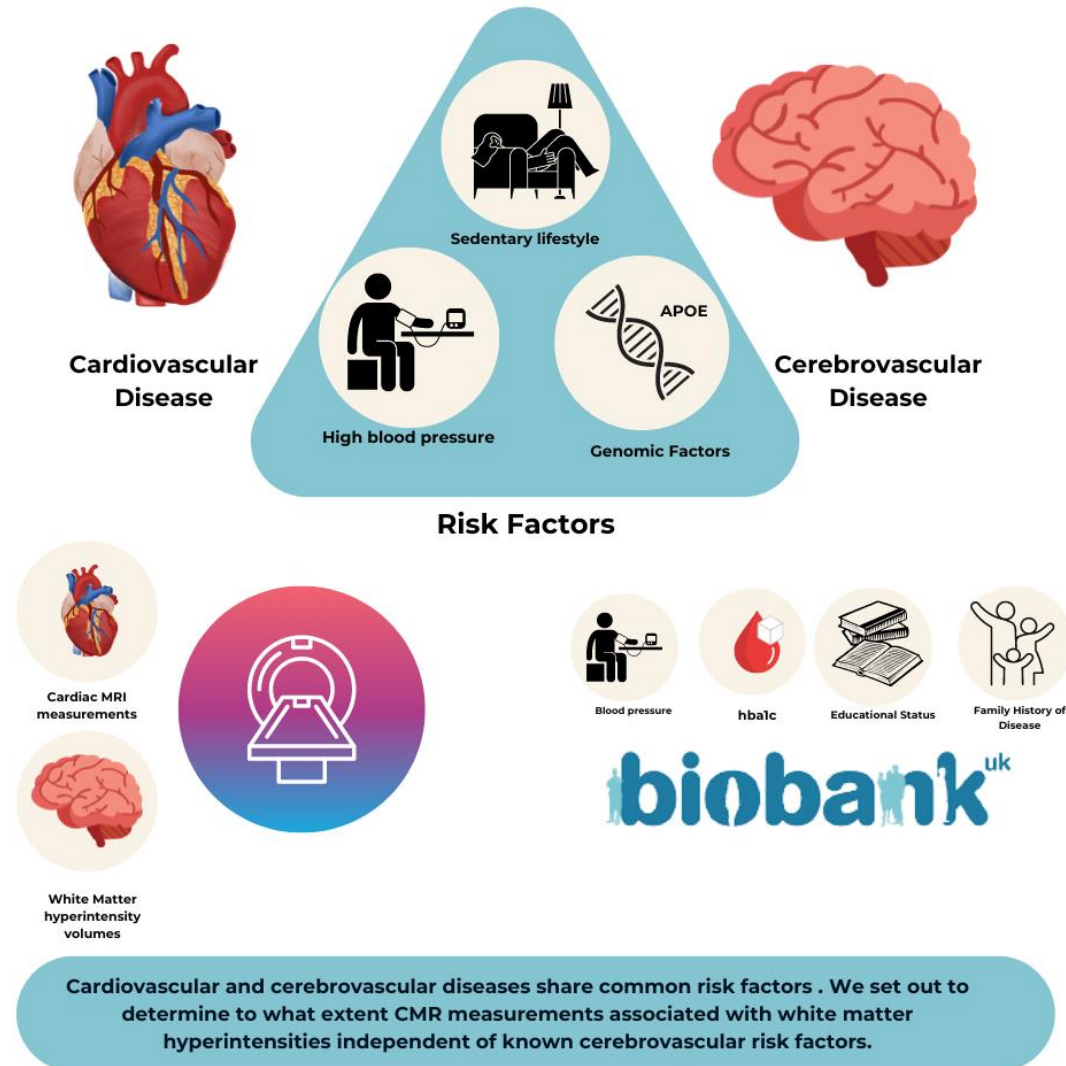
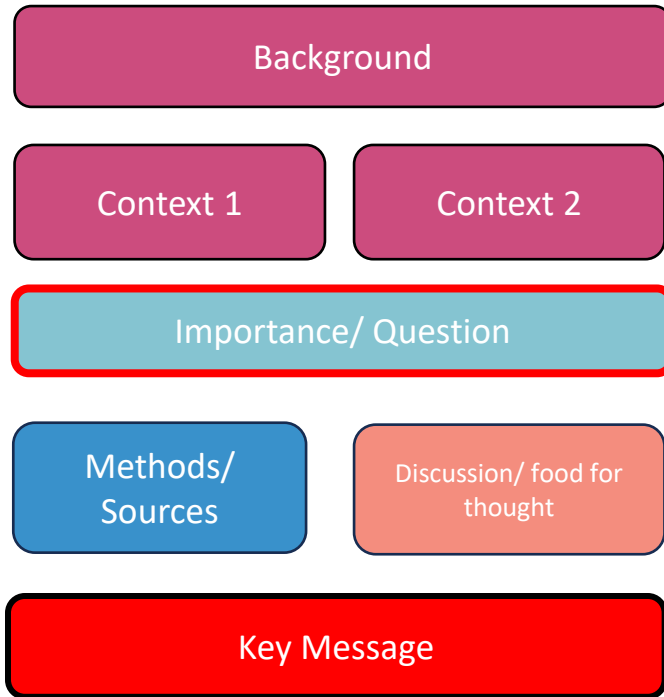
A new study conducted by researchers from UNC-Chapel Hill, the University of Pennsylvania and Purdue University shed light on the close relationship between cardiovascular diseases and brain diseases such as stroke, dementia and cognitive impairment.

By UNC Gillings School of Global Public Health, Thursday, June 15th, 2023

1. Read the news article and abstract of the paper and identify how they are different?
2. What was the purpose of the study ?
3. What were their results?
4. What techniques did they use ?
5. What did you find interesting
6. Could you put your findings from research and analysis into a short paragraph ?
7. Limitations within their study (you may not be able to do everything within research settings)
8. Discuss findings in group (what went well, what was surprising and what was challenging)



Example



Paper 2

How can heart failure contribute to cognitive impairment?

By [Corrie Pelc](#) on July 19, 2023 — Fact checked by [Ferdinand Lali, Ph.D.](#)

Read paper [here](#)

1. Read the news article and abstract of the paper and identify how they are different?
2. What was the purpose of the study ?
3. What were their results?
4. What techniques did they use ?
5. What did you find interesting
6. Could you put your findings from research and analysis into a short paragraph ?
7. Limitations within their study (you may not be able to do everything within research settings)
8. Discuss findings in group (what went well, what was surprising and what was challenging)

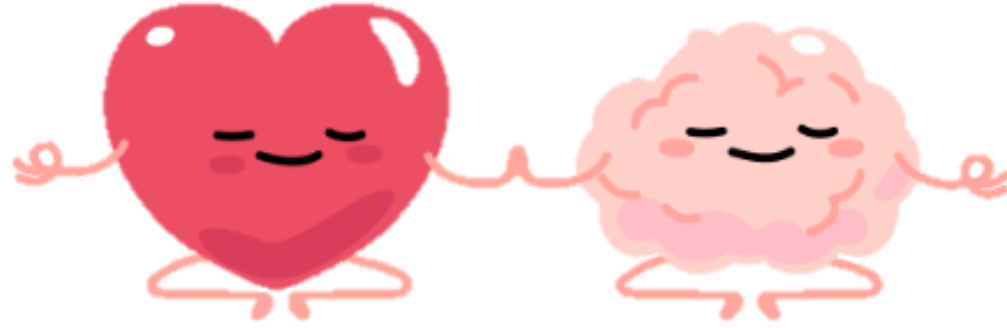
Conclusions



An understanding of the **formality**, **objectivity**, and **precision** required to write academically. You will also learn how to **communicate your project** work in an academic capacity, and how to **form conclusions**.

- How to structure your research project
- Research follows a structure of Background/introduction, Method, Results, Discussion and future work
- Always have a central take home message





See you next week !

Next steps

Complete the pre-session tasks

What's coming up?

Drop-in sessions are run on the following evenings from 6pm – 7pm.

Monday 18th March

Monday 25th March

Your next subject session will be on (**Wednesday 20th March**) from 6pm – 7:30pm.

Any questions?

If you need any support, or have any further questions, please don't hesitate to send the UCL Expand Team an email at wp.post16@ucl.ac.uk or drop us a text on **07857630033**.



Ask us a question!